

BALDOR • RELIANCE

Customer information packet

FDEM4314T-5

60HP, 1780RPM, 3PH, 60HZ, 364T, A3670M, TEFC, F

Class - None

Division - Not Applicable

Specifications

Enclosure	TEFC
Frame	364T
Frame Material	Iron
Frequency	60.00 Hz
Motor Letter Type	Three Phase
Output @ Frequency	60.000 HP @ 60 HZ
Phase	3
Synchronous Speed @ Frequency	1800 RPM @ 60 HZ
Voltage @ Frequency	575.0 V @ 60 HZ
XP Class and Group	None
XP Division	Not Applicable
Ambient Temperature	40 °C
Auxillary Box	No Auxillary Box
Base Indicator	Rigid
Bearing Grease Type	Polyrex EM (-20F +300F)
Current @ Voltage	54.700 A @ 575.0 V
Design Code	B
Drip Cover	No Drip Cover
Duty Rating	CONT
Efficiency @ 100% Load	95.0 %
Feedback Device	NO FEEDBACK
Heater Indicator	No Heater
High Voltage Full Load Amps	54.7 a
Insulation Class	F
Inverter Code	Inverter Ready
KVA Code	G
Lifting Lugs	Standard Lifting Lugs
Motor Lead Quantity/Wire Size	3 @ 4 AWG
Motor Standards	NEMA
Motor Type	A3670M
Mounting Arrangement	F1
Number of Poles	4

Part detail

Revision	F
Type	AC
Mech. spec.	
Base	
Status	PRD/A
Elec. spec.	A36WG4040
Layout	617431-412
Eff. date	09-27-2021
CD Diagram	416820-036
Poles	04
Leads	3#4
Proprietary	False
Created date	05-30-2018

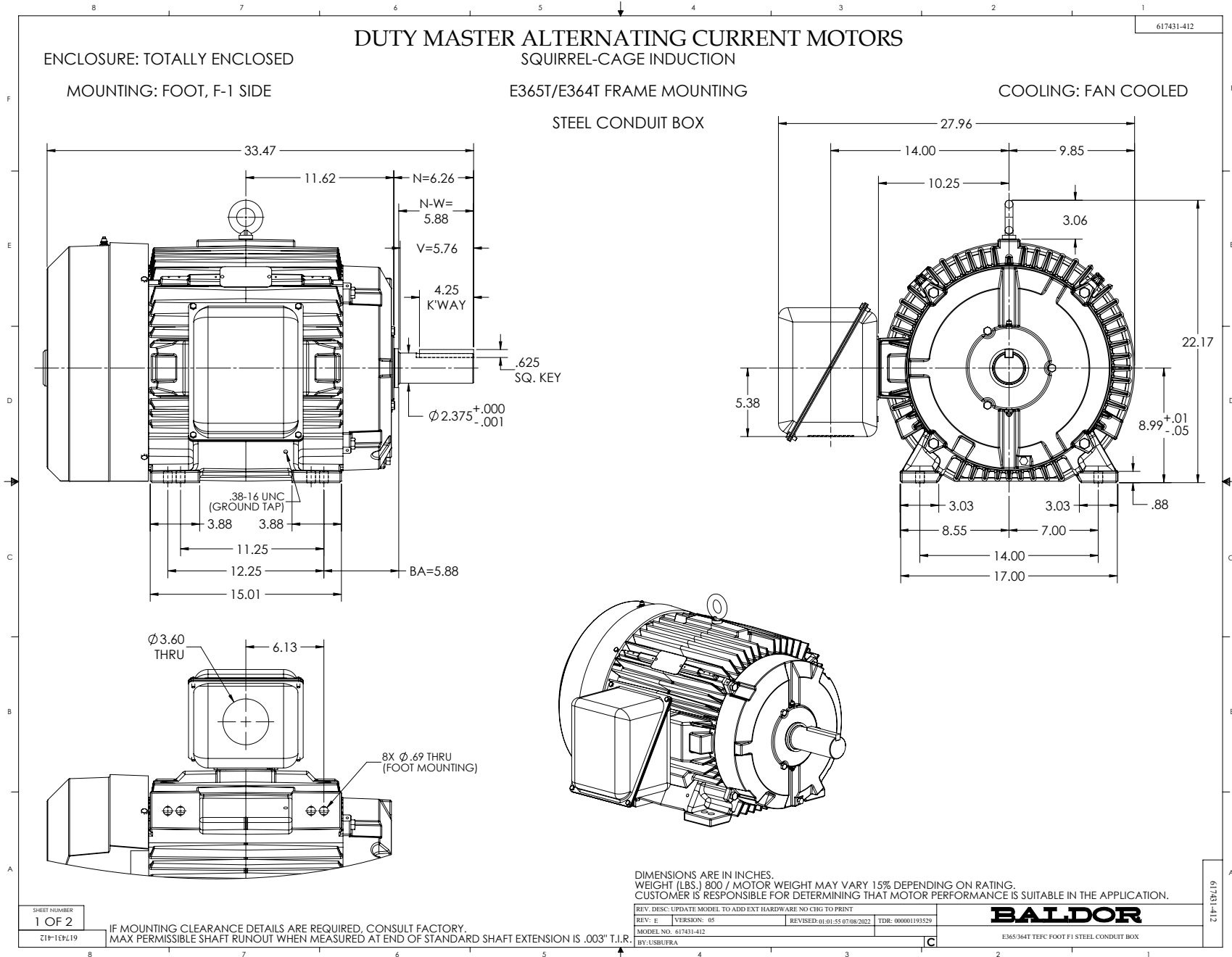
Overall Length	33.48 IN
Power Factor	87
Product Family	FARM DUTY
Pulley End Bearing Type	Ball
Service Factor	1.15
Shaft Diameter	2.374 IN
Shaft Ground Indicator	No Shaft Grounding
Shaft Rotation	Reversible
Shaft Slinger Indicator	No Slinger
Speed	1780 rpm
Speed Code	Single Speed
Starting Method	Direct on line
Thermal Device - Winding	None

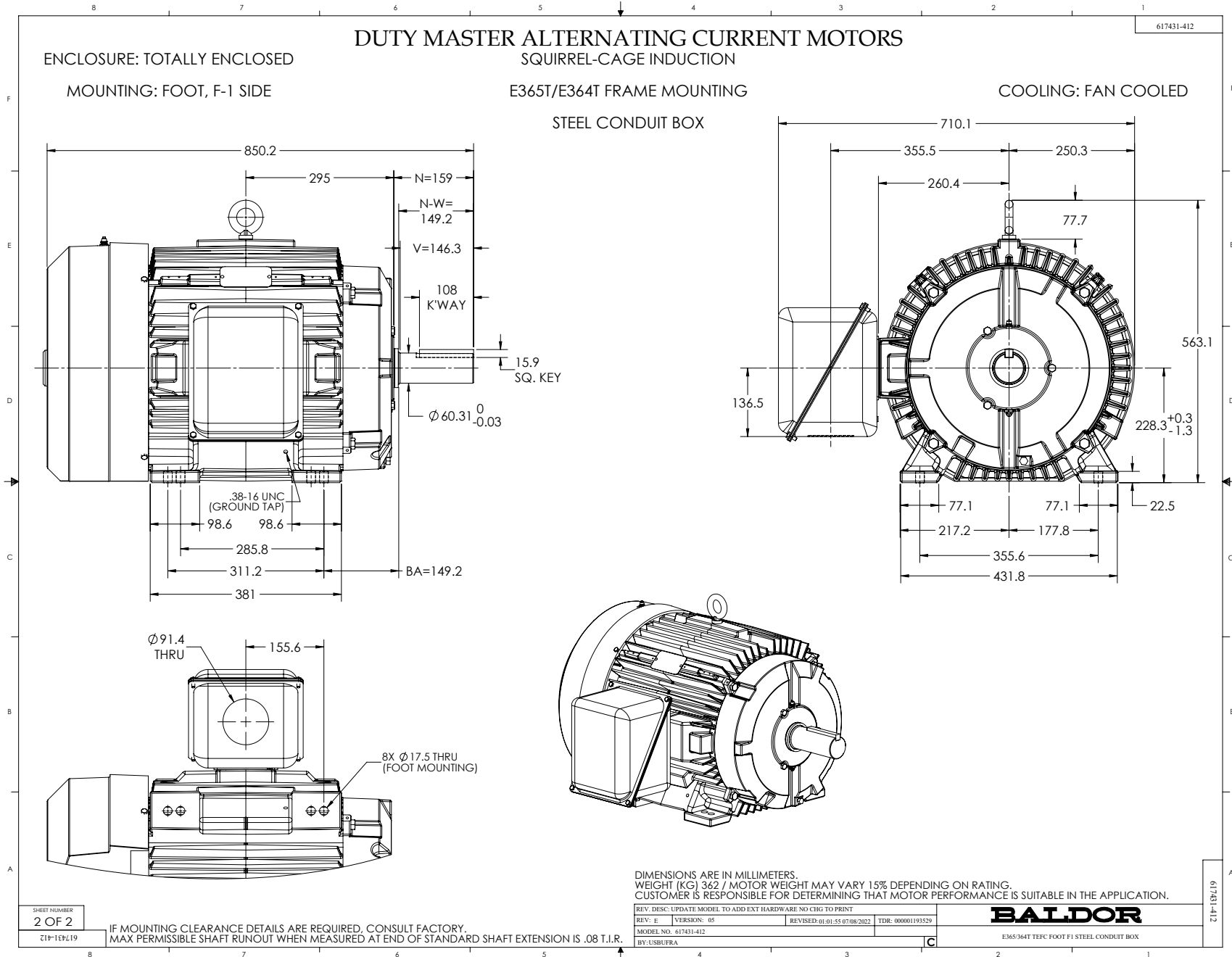
Nameplate

NP2496L	
MOBIL POLYREX EM	

NP3159L

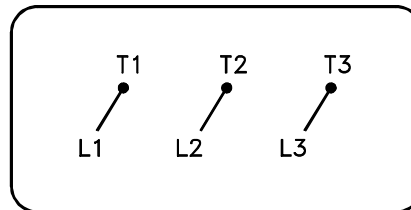
SPEC NO.	A36-0052-4040	CAT.NO.	FDEM4314T-5	FRAME	364T				
HP	60	VOLTS	575	PHASE	3	DESIGN	B	TYPE	P
RPM	1780	AMPS	54.7	HZ	60	AMB	40	SF	1.15
DRIVE END BEARING	65BC03JGG30A	DUTY	CONT	INSUL.CLASS	F				
OPP D.E. BEARING	65BC03JGG30A	ENCL	TEFC	CODE	G				
SER.NO.		POWER FACTOR	87	NEMA-NOM-EFFICIENCY	95				
		MAX CORR KVAR	14.7	GUARANTEED EFFICIENCY	94.1				
		NEMA NOM/CSA QUOTED EFF							
				MOTOR WEIGHT					





416820-036

A-C MOTOR
CONNECTION DIAGRAM
STANDARD 3 LEAD CONNECTED



(N.P. 1575-BA)

416820-036

REV. DESC: LOADED TO BUS, C/R 335225		
REV. LTR: -	VERSION: 00	TDR: 000000538207
FILE: \MGA\00000\682	REVISED: 11:54:06 04/30/2010	
MTL: -	BY: RAGRA	

BALDOR

CONN DIAG - STANDARD 3 LEAD
SH 1 of 1